



# Speedware Autobahn II

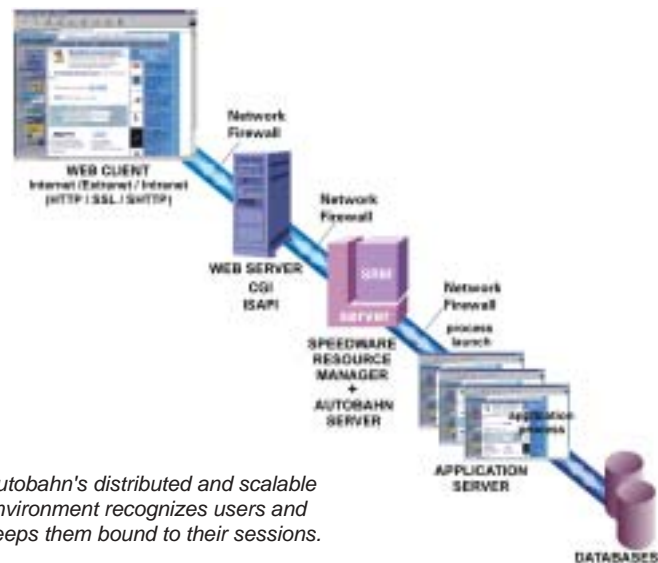
Enterprise Web Application Development

**SPEEDWARE**



## The Challenge... Affordable Enterprise Web Applications

The world in which we live today has no boundaries. Companies need to communicate critical information to their key stakeholders through the web at all times. They must offer their customers access to real-time pertinent information and facilitate online transaction processing. They need to exchange critical data with suppliers and partners at any hour of the day. In fact, the overall success of a company often depends on its ability to extend business-critical applications over internal networks and over the Internet.



*Autobahn's distributed and scalable environment recognizes users and keeps them bound to their sessions.*

## The Solution... Speedware Autobahn II

Speedware offers the tools to build large-scale enterprise web applications at a fraction of the price of comparable products. Speedware Autobahn II is a complete, cost-effective development environment that allows you to use native and innovative web technologies to create new web applications or web-enable your existing ones. Its competitive price, along with its advanced functionality, power, extensibility and ease of use, make Speedware Autobahn II the perfect enterprise web application development platform.

# Speedware Autobahn II

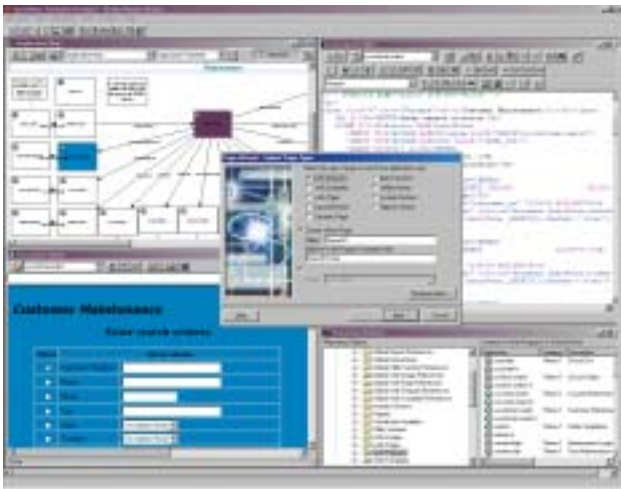
## Enterprise Web Application Development

### Custom Web Applications Quickly and Easily

Speedware Autobahn II includes a number of features designed to facilitate the process of developing web applications — which saves you time and money. It is wizard-driven and possesses an integrated browser as well as HTML and script code editors. It also contains both a built-in report editor as well as an application deployment mechanism. This integrated development environment allows you to design, code, view and test your applications all from within one intuitive program.

### Robust, Scalable and Secure Run-Time Environment

Ensuring the security of your web applications is a crucial consideration for any company. Speedware Autobahn II has a unique set of internal security features that ensures 100% secure point-to-point access. Its n-tier scalability means that its capacity can be precisely adjusted to the environment in which it will be used, whether this means a couple of branch offices or the full stretch of a global corporation.



### Adapt your Applications to Today's Technologies

Speedware Autobahn II's extensibility features allow customers to maximize their investments in application development. It can seamlessly connect to a wide variety of servers, and its code is 100% portable between these environments. In addition, the open web architecture supported by Speedware Autobahn II allows for smooth integration of current and future web technologies, such as web services, and tight integration into your legacy systems.

### Speedware Autobahn II Features

**Advanced security features.** Speedware Autobahn II supports a number of security concepts such as SSL, IP address and browser validation, a wide range of firewall configurations, and user-bound sessions.

**Integrated development environment.** Users can design, code, view and test their applications — all from within one intuitive program.

**Powerful wizards.** Speedware Autobahn II's wizards save time by automating the creation of forms for data manipulation tasks, such as the addition, modification, deletion, and selection of records.

**Scalable, distributed computing platform.** With this highly-scalable distributed environment, applications can be partitioned over several machines while Autobahn dynamically controls the required number of server processes to match the variations in user session demand.

**High-level scripting language.** Speedware Autobahn II's high-level scripting language is designed to eliminate the majority of redundant coding — optimizing developer productivity.

**State-oriented and stateless environments.** Developers may choose to operate in either environment to provide either robust session persistence or highly-scalable shared-session solutions.

**Distributed development environment.** Speedware Autobahn II allows you to create applications for use in HP-UX, MPE/iX and Windows environments. The code is 100% portable across these platforms.

**Open web architecture.** Speedware Autobahn II's open architecture allows for the integration of current and future web technologies.

**Database independence.** Code created with Speedware Autobahn II is database independent and offers native RDBMS access and support for ADO/ODBC.

**Automatic web-enablement.** One of the most effective means through which to maximize return on investment is to web-enable your existing applications. SpeedWeb, an integral component of Speedware Autobahn II, allows the complete and automatic web-enablement of applications written in classic Speedware V7.

**SPEEDWARE**

# Speedware Autobahn II

Enterprise Web Application Development

## About Speedware

Speedware Corporation Inc. (TSX: SPW) is a leading provider of application development technology, business intelligence software and wireless Internet solutions. With headquarters in Montreal and a distribution network spanning 35 countries, Speedware offers market leaders the end-to-end solutions they need to enhance their competitive advantage.

Celebrating over 25 years in business, Speedware provides professional consulting services and award-winning support to ensure its customers' ongoing success.

Speedware Corporation  
9999 Cavendish Boulevard  
Suite 100  
St. Laurent, Quebec Canada  
H4M 2X5  
Tel.: (514) 747.7007  
North America: 1.800.361.6782  
Europe: +44.20.8938.6302  
speedwareinfo@activant.com  
www.speedware.com

The logo for Speedware, featuring the word "SPEEDWARE" in a bold, italicized, sans-serif font. A white swoosh underline is positioned beneath the letters "E" and "D".

## Speedware Autobahn II Enables...

- **Cost Effectiveness:**  
Design custom enterprise web applications at an affordable price.
- **Rapid Application Development:**  
Develop applications in an integrated, wizard-driven, productivity-rich environment.
- **High-Volume Transaction Throughput:**  
Maximize high-volume transactions through Speedware Autobahn II's scalable distributed computing platform.
- **High Performance Data Access:**  
Automated load-balancing capabilities support both state and stateless environments.
- **The Extended Value of your Legacy Applications:**  
Automatically web-enable your legacy applications to enhance their user interface and extend their lifespan.
- **Improved Business Communication:**  
Link your customers, partners and suppliers to your business by moving more of your applications to the web.

## Environments

Speedware Autobahn II uses HTML and a high-level scripting language to render dynamic web applications. In addition, it can complement other web technologies such as XHTML, Microsoft ASP or C#, Java's J2EE, web-services, Flash, JavaScript, XML, SOAP.

## Platforms

Speedware Autobahn II is a Windows-based integrated development environment with support for HP-UX, MPE/iX and Windows servers.

## Databases

Supports native access to Oracle, Microsoft SQL Server, TurboImage/XL, HP Eloquence, Omidex, Omni-Access, DB2, Informix, Sybase, KSAM, CISAM, flat files, and a variety of other file systems through ADO and ODBC.