

SPEEDWARE PROFESSIONAL

Summer 2002

Latest News

Speedware Analytics used by Quebec's public clinics. [More](#)

Speedware's OLAP tool integrated into forestry ERP system. [More](#)

Speedware signs partnerships with HP equipment providers. [More](#)

HP reports success of migration programs — Speedware's role instrumental. [More](#)

Speedware's reporting and analytics tools integrated into Purkinje's. [More](#)

Special Events

Where we've been

Web Seminars

Speedware Day

HP World 2002

Focus on Partners

OdySoft

University of Texas

Technical Articles

Sorting records in the DPW — Autobahn's Dynamic Page Wizard creates a set of Web pages for database access. [More](#)

Sysdoc: a developer's dream — Sysdoc gives Designer developers a quick and easy way to create system documentation. [More](#)

Expanding List Selected in Visual Speedware — Visual Speedware applications usually include a List Selected window. [More](#)

Media applications, multiple data sources — Do you have multiple data sources? Are you using Decision Server and Media together? [More](#)

Liven up your Esperant reports — Reports have to display solid, useful information, but they don't have to be visually dull. [More](#)

RPC and the HPe3000 — Patches. [More](#)

Speedware is proud to have earned its third consecutive certification under the prestigious Support Center Practices (SCP) program.



Speedware was awarded very high scores in a number of areas including customer feedback, Total Quality Management (TQM) and employee development programs. "The Speedware Tech-Centre consistently demonstrates a strong level of performance relative to the criteria defined in the program," noted Gordy Stauffer, Certification Auditor, in his assessment report.

"Achieving strong levels of performance and striving to continuously improve our technical support services are a top priority at Speedware," said Maria Anzini, Director of Worldwide Customer Service and Product Support at Speedware. "I am very proud of my technical support staff and appreciate the hard work of my colleagues in other departments."

Volume 12
Number 3

SPE-MKPROF12-03

SPEEDWARE

LATEST NEWS

Speedware Corporation Inc.
9999 Cavendish Blvd.
St. Laurent, Quebec
Tel: (514) 747-7007
Fax: (514) 747-3380

Email:
info@speedware.com

Speedware Tech-Centre business hours:

As always — 9 to 5 your time
1-800-361-6782 (US or
Canada)
(514) 747-9494 (Intl)
0.800.96.77.14 (UK)
(514) 747-3320 (Fax)

Email:
support@speedware.com

Support Website:
www.speedware.com/sws

Speedware, Visual
Speedware, Speedware
Autobahn, MobileDev,
EasyReporter, Media and
Esperant are trademarks of
Speedware Corporation Inc. All
other products are trademarks
of their respective
manufacturers.

© 2002 Speedware Ltd.

New customers and business partners

The following press releases chronicle some of Speedware's activities in the last few months.

Speedware's analytics tools implemented in Quebec's public clinics (CLSCs)

Speedware is proud to announce that it will be providing its business intelligence (BI) solutions to Quebec's network of public healthcare clinics, known as CLSCs. The Association of CLSCs has developed innovative dashboards with Speedware's Media solution that will allow healthcare facilities to monitor their patient care performance.



The implementation of this project will be completed over the next three years. To date, 72 facilities have already signed on and it is expected that many others will join the program in upcoming months.

Each of the participating clinics can access information pertaining to patient information, such as types and lengths of procedures, as well as administrative information for budgeting and human resource management purposes through a user-friendly interface in Windows client/server mode.

As well, at the end of the year, a centralized repository of information gathered from each of the establishments will be available to each clinic through a Web-based interface. This will allow for easy access and exchange of information between clinics and will allow them to compare their performance indicators with each other.

Speedware's OLAP tools bundled into ERP solution for forestry industry

Speedware has signed a distribution agreement with Scoopsoft Inc., a developer of integrated management systems for the wood products industry. Speedware's advanced On-Line Analytical Processing (OLAP) software tools will be integrated into Scoopsoft's ERP solution to allow its customers to easily analyze complex manufacturing data for improved business performance. This solution is targeted specifically to decision-makers in the forestry industry.

This partnership will allow Scoopsoft's customers to analyze data, residing on their IBM iSeries databases, through an interactive interface with rich visuals, known as dashboards, so they can quickly identify trends and relationships normally hidden in data. Customers will be able to access pertinent information in a timely manner to monitor production, sales and financial indicators. Dashboards will illustrate shipment and production volumes against budgets, inventory levels, logs consumed in number and cubic meters, recovery and throughput rates, along with alerts and drill-down capabilities by mill, species, dimension, grade and length.



Speedware Signs Partnership Agreements to Continue to Provide Customers with Affordable HP Equipment

As part of its commitment to protecting the value of the HP community's IT investments, Speedware has partnered with three HP equipment vendors.

.commerx

For the Canadian market, Speedware has signed an exclusive partnership agreement with Commerx Computer Systems, a value-added reseller of Hewlett-Packard computing platforms in Canada. Speedware and Commerx are both long-time partners of Hewlett-Packard. As such, they possess a unique appreciation of the needs of Canadian companies whose applications run on HP servers. Under the terms of the agreement, Commerx will become the exclusive provider of new HP hardware for Speedware's Canadian customer base.

EURODATA

Furthermore, Speedware reached an agreement with Eurodata. The company will provide Speedware's customers with competitively priced refurbished HP equipment. It too has been offering HP equipment worldwide for two decades and has become one of the most reputable reseller of pre-owned HP equipment in the world.



Finally, our customers from the US will benefit from Dimension Data's expertise as a provider of HP hardware. Through this partnership, Speedware customers will benefit from Dimension Data's skilled expertise in the assessment and recommendation of hardware environments.

HP reports success of its migration programs — Speedware's role instrumental

In mid-June, Hewlett-Packard announced that a wide range of customers and independent software vendors have already embraced HP's e3000 server migration initiatives. HP is offering these businesses a comprehensive array of migration services and incentives to ease their transition to other HP platforms.

HP was proud to cite five strong examples of companies that have already successfully undertaken migration projects — four of which are using migration solutions by Speedware! CT3, Multomah Education Service District, Tenex, and Virginia International Terminals, Inc. are great examples of companies that are taking full advantage of Speedware's migration services.

Speedware's reporting and analytics tools integrated into Purkinje's solution to form complete e-patient care system

Speedware has announced that it has signed a distribution agreement with Purkinje. Speedware's advanced analytical and reporting tools will be integrated into Purkinje's application to offer a complete patient e-file solution to the health care industry.

Purkinje will also act as a value-added reseller of Speedware's business intelligence tools to its customer base. The partnership will allow Purkinje's customers to generate powerful queries and reports from patient information contained in their Clinical Communicator application. Health and social service professionals will now be able to analyze and report on data from various existing sources such as patient files, diagnostics, laboratory test results, medical imagery, appointment management, and treatment planning.



SPECIAL EVENTS

Where we've been

These are some of the conferences and conventions that Speedware has participated in lately:

- **June 19-20 — DCI's CRM Conference & Expo, Boston, MA.** Speedware was pleased to meet with some of our customers in the Boston area at our exhibit booth and honored to participate in the discussion panel on Business Intelligence for CRM.
- **June 12 — Improving Business Performance with Analytics, Web Seminar.** Speedware introduced our current users as well as newcomers to the power of OLAP technology through this educational online session.
- **May 28-29 — Compu-finder Group Convention in IT (Congrès Technologique), Tremblant, QC.** Speedware met with local Quebec enterprises looking for a variety of IT solutions. This special event hosted seminars from some of the top professors in the IT field as well as an exhibit hall filled with Quebec's top IT solution providers
- **May 15 — Creating Reports on the Fly, Web Seminar.** Speedware educated our current users as well as newcomers on the speed and functionality of enterprise query and reporting through this educational online session.
- **May 9-10 — Congrès des archivistes médicales, Lac Delage, QC (AQAM - Association québécoise des archivistes médicales).** Speedware received a warm welcome from the members of the Quebec Medical Archivists Association at this special conference that highlighted the latest in IT for the healthcare field.
- **May 6-7 — Journées Francophones d'Informatique Médicale, Quebec City, QC. (SoQuibs - Société Québécoise d'Informatique Biomédicale et de la Santé).** Speedware along with our Healthcare partner Purkinje, presented our robust BI solutions to members of the Quebec Society of Biomedical Information Technology at this unique international gathering.
- **April 10-1 — Healthcare Informatics e.MD Conference & Expo, Rosemont, IL.** Speedware demonstrated some of our BI solutions for healthcare to medical professionals at his unique event that showcased information technology solutions for medical practices.

If you missed one of our Web seminars on Reporting or Analytics and you would like to take advantage of this free education, you can now schedule a personal online seminar on one of these popular topics at the following Website:

http://www.speedware.com/whats_new/upcoming_events/one_on_one_educational_web_seminars/



Web seminars

Since HP's announcement to discontinue the HP e3000 product, Speedware's DT Marketing department has been hosting a series of Web seminars for its client base and has had a very successful attendance rate. We hope that you have been able to attend our first Web seminar: *HP e3000 Speedware applications: Choosing the right future path.*

During the month of July, August and September, we have scheduled the following events to better suit your schedule. Mark your calendars!

- **Planning and Budgeting for Migration — July 24 and August 21, 2002.** During this presentation, we will discuss a wide range of issues related to Image database migrations, from database selection, to costs, comparisons, Speedware database code portability, industry trends, effects on applications, and solutions for technical caveats like arrays and date items. We will also propose migration methodologies to migrate your Image databases, give you a glimpse of our upcoming Windows-based database migrator tool, and discuss the advantages of database migration tools.
- **Database Migrations — July 31, August 28 and September 11, 2002.** This Web seminar can help you make clearer choices. Our team of professionals will provide you with the information you need to prepare, plan and budget your migration endeavour. This seminar will address concerns such as the planning and budgeting of migrating, hardware and database choices and costs, resource planning, application "facelift" costs, as well as compilers and migration tools.

If you would like to know more about these events please visit the following link:
[www.speedware.com/whats_new/
upcoming_events/migration_web_seminars/](http://www.speedware.com/whats_new/upcoming_events/migration_web_seminars/)

We look forward to your participation.

Speedware day in Denver and Mississauga

This year, as you may already know, Speedware has decided to take its user conferences on the road. The first two events were held in Denver, Colorado on May 23, 2002 and in Mississauga, Ontario on June 27, 2002.

Each event consisted of a full day of presentations and discussions regarding the challenges that HP e3000 users are currently facing and the choices available to them. Speedware and partners Hewlett-Packard, DISC, Quest and Dimension Data discussed customers' concerns including the planning and budgeting of porting, application and database porting, the replacement of reporting and analysis tools, as well as improving the visual interface of legacy applications. Participants had the opportunity to discuss the unique challenges they are facing and benefit from hands-on demonstrations.

The customer turnout was successful and we plan to hold many more in the next couple of months. Keep an eye on our Web site for more information.

Sneak Peak: SpeedWeb

Interested in instantly Web-enabling your existing Speedware V7 applications?

Speedware is proud to introduce SpeedWeb, an upcoming new component of Speedware Autobahn II. This new turnkey feature will completely Web-enable your existing V7 applications and requires no application code modification at all. This easy step will enhance the graphical interface of your app and can significantly extend its life. To learn more, drop by our booth at HP World or visit us on the Web at www.speedware.com/speedweb

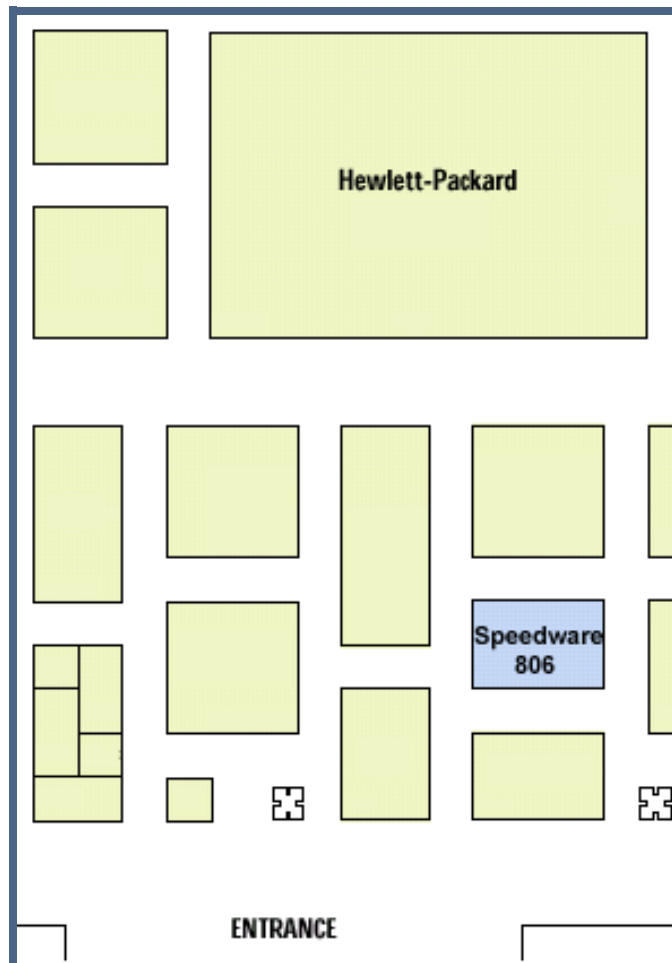
Speedware at HP World

September 23-27, 2002 - Los Angeles, CA

Drop by booth # 806 to learn about the new features of our application development technology and business intelligence products. You will also get a sneak preview of some of our new product features, such as Speedware Autobahn II's new feature known as SpeedWeb. Our team of HP e3000 migration experts will be hosting a number of training sessions and personalized demos about all aspects of migration planning. Catch one of the sessions hosted by us (see right for details) and join us at the "Migrate" Special Interest Group (SIG) on Wednesday from 3 to 5pm or participate in the SIG we will be hosting on Speedware solutions on Friday from 9 to 10am.

806

Look for Speedware in booth number 806.



Speedware will host the following sessions:

Live Migration Demonstration: TurboIMAGE to RDBMS

Nick Fortin, Product Marketing Manager
Speedware Corporation
nfortin@speedware.com

Conference Track: MPE
Target Audience: Developers and Management
Technical Level: Intermediate

Summary — During this live demo, we will discuss a wide range of issues related to Image database migrations including database selection and costs, comparisons, Speedware database code portability, industry trends, effects on applications, as well as solutions to technical caveats, such as arrays and date items. We will also propose migration methodologies to migrate your Image databases, give you a glimpse of our upcoming Windows-based database migrator tool, and discuss the advantages of database migration tools.

Migrating 4GL Applications Written in Speedware, Powerhouse & More

Christopher Koppe, Director of Marketing,
Speedware Corporation
ckoppe@speedware.com

Conference Track: MPE
Target Audience: Developers and Management
Technical Level: Intermediate/Novice

Summary — With the demise of HP e3000, many companies are evaluating what to do with homegrown 4GL applications. This session looks at the various migration paths available for Speedware, Powerhouse, and Transact 4GL applications.

Budget, Timeline and Decision Inflexion Points for HP e3000 Migrations

Christopher Koppe, Director of Marketing,
Speedware Corporation
ckoppe@speedware.com

Conference Track: MPE
Target Audience: Management
Technical Level: Intermediate/Novice

Summary — Planning and budgeting an HPe3000 migration can involve complex issues such as hardware and database purchases, 3GL and 4GL data migration resources, and software licensing. This presentation offers various budget models and ways to plan an expenditure timeline for migration activities.

FOCUS ON
partners

OdySoft

In December 2001, Speedware signed a strategic partnership with OdySoft to integrate Speedware's reporting and analytic software into OdySoft's workforce management (WFM) system (Calabrio). Speedware's business intelligence reporting and analytics suite provides OdySoft's system with high quality reporting and graphical analytics tools for enhanced decision-making and improved workforce management.



To accurately forecast and schedule contact center agents respecting budget constraints, contact volumes, service level, agents' preferences/skills, business rules, labor agreements, and other numerous variables, is a daunting and complex task. In the last few years, multi-site operations, multi-channels communication, customer and product proliferation have dramatically increased this complexity. In today's customer-centric business world, workforce management has a concrete and measurable impact on business operations, competitiveness and market positioning. Workforce management also strongly affects long-term planning and budgeting, agents' skills development, hiring and facilities operations. It has become a necessity for organizations to use a sound product suite that will answer their strategic challenges.

With Calabrio, it becomes simple to schedule the appropriate resources at the right time in sufficient number, at the best possible cost while ensuring that customer service levels are met and exceeded. It is also easy to plan accurate call distribution forecasts and agents schedules that match skill sets to business needs. The multilingual capability of the software (English, French, Spanish and

Portuguese), quality, innovative "look and feel," and user-friendly interface enable you to effortlessly optimize your resources while effortlessly allowing for both agent preferences and contact center objectives. This proven solution in 20 to 10,000+ agents centers, takes a few days to be trained on, is IT-friendly and has lean hardware requirements.

The Calabrio WEB II module offers real-time adherence management, supervisory functions, performance metrics tracking, and agent's self-service features. Outsourcing service is also available. Supervisor, Quality and Productivity, Workspace Management and Campaign are other value-added modules that provide you with the edge to reach your goal. Extensive functionalities, intuitive navigation, seamless third-party integration and quick ROI are just a few reasons that make Calabrio the most cost-effective and highly functional workforce management tool in the industry.

"We selected Speedware because of their complete range of business intelligence products and high quality client services," said Gilles Plourde, Vice President Business Development, OdySoft.

"We want to offer our customers the most comprehensive workforce management solution by adding the analytical and decisional component required to analyze and report on workforce activity within the call center market."

Canadian and French Market Leader, OdySoft, offers "hot" solutions for tomorrow's workforce management, on three continents. For more info, visit us today at <http://www.calabrio.com/> or contact us toll free at 1-877-646-4774 x223.

University of Texas

Business Intelligence for a great cause

Researchers at the University of Texas at Arlington are using Speedware's OLAP tools for a great cause.

Professors Dick Schoech and Joan Rycraft were recently awarded a DHHS ACYF grant to use OLAP technology to help the Texas Department of Protective & Regulatory Services (TDPRS) improve decision-making by working with large datasets, stored in TDPRS's data warehouse. The project team, assisted by Dr. John Fluke of Walter R McDonald & Associates, is using OLAP tools in the data gathering stage of what is known as an Evidence-Based Approach to Practice (EBP).

The EBP approach will help TDPRS's decisions comply with Federal data indicators promulgated in the Adoption and Safe Families Act. Indicators such as the incidence of child abuse, the length of time to achieve adoption, and the stability of foster care placement have been defined and are part of the Act, which aims to promote the safety of children. Social services professionals, who practice EBP, search for the best evidence relating to each of the issues they are addressing and take appropriate action based on this data.



Often, BI tools are used by knowledge workers in companies to help them improve the quality and speed of decision-making. It is interesting to see how field workers in the public service can also benefit from the strength of OLAP tools to promote social welfare.

Speedware and the HP-UX 10.20

As you know, Hewlett-Packard stopped producing and selling the HP-UX 10.20 operating system at the end of June 2002. The discontinuance letter on the HP Web site includes the following statement:

"The HP-UX 10.20 operating system, along with the associated products and manuals will be available for purchase until June 30, 2002, after which time these products will be removed from HP's price list and enter maintenance mode."

In accordance with HP's decision, Speedware will soon stop certifying its development technology and business intelligence software on the HP-UX 10.20 operating system. Specifically, development technology software after Speedware V7.07 will not be certified for HP-UX 10.20. Speedware customers who encounter problems with our technology on HP-UX 10.20 should consider upgrading to HP-UX 11 if a solution is available on that operating system.

Speedware applications should keep working smoothly when you move to HP-UX 11, but if upgrading proves to be a daunting task because of forward incompatibilities, our award winning SCP-certified Tech-Centre is available to assist you.

For more information, visit us at www.speedware.com, or contact us at support@speedware.com.

Let us know how we can give you a hand.

Sorting records in the Dynamic Page Wizard

Autobahn's Dynamic Page Wizard creates a set of Web pages that let end users perform the whole range of database functions: viewing, creating, modifying and deleting records.

As part of the Speedware code that it generates, the DPW uses *subsections* to implement these operations.

Subsections provide a handy way of reusing Speedware code; they work like functions but also have access to the current parameters, variables and so on. However, subsections do not support the SORT verb — and you may sometimes want to sort your records, for example before displaying a list of records.

If you find yourself in this situation, we have a solution that lets you add the SORT verb outside the subsection, while conserving the original data-access and error-reporting functionality.

To put this plan into action, follow these steps in Autobahn Designer (note that nearly all the work takes place in the Code Editors):

1. Open the repository and application containing the original data-access page created with the DPW — we'll call it DPWPage.
2. Run the Page Wizard (the regular Page Wizard, not the DPW) to create a new Web Program named SortPage, then delete its Speedware code from the Code Editor. You'll be replacing the code in the next steps.
3. Send your original page — DPWPage — to the Code Editor and locate the ListRecords subsection. It looks like the one at the left below; you'll notice it extracts and displays records, but does not sort them.
4. Copy the FOR loop in the subsection, then paste it into SortPage's empty Code Editor.
5. Back in DPWPage, delete the FOR loop and replace it with a section call to SortPage:

```
REPORT-SortPage
    USING _RECORD_COUNT MODIFY;
```

The variable `_RECORD_COUNT` is passed with the MODIFY option to conserve the DPW's functionality of displaying an error message if the record count returned is 0.

Before — the original ListRecords subsection

```
SUBSECTION ListRecords:
  _RECORD_COUNT = 0;
  FOR FLAT.TABLE1 SELECTED("Table1") DO BEGIN
    _RECORD_COUNT = _RECORD_COUNT + 1;
    IF (_RECORD_COUNT = 1) THEN BEGIN
      PRINTHTML "DPWPage.html", "Header";
      PRINTHTML "DPWPage.html", "ListHeader";
    END;
    LOADVAR {ITEM1} = $TRIM($EDIT(ITEM1), RIGHT);
    LOADVAR {ITEM2} = $TRIM($EDIT(ITEM2), RIGHT);
    LOADVAR {ITEM3} = $TRIM($EDIT(ITEM3), RIGHT);
    PRINTHTML "DPWPage.html", "ListRow";
  END;
  IF (_RECORD_COUNT = 0) THEN BEGIN
    LOADVAR {_ERROR_MSG} = "No records meet your search
criteria.\nPlease enter new search criteria.";
    CALLSUB "Query";
  END;
  ELSE BEGIN
    PRINTHTML "DPWPage.html", "ListFooter";
    PRINTHTML "DPWPage.html", "Footer";
  END;
ENDSUB;
```

This subsection displays a list of records on a Web page, but it doesn't sort them.

Not in subsections

The following reporting verbs are not allowed in subsections coded in REPORT sections:

- AT
- BREAK
- CONTINUE
- Any DCL or PARMs
- DELETE
- FNCKEY
- LINK
- SET
- SORT
- SUBSECTION (meaning subsections cannot be nested)
- TAKE

6. Return to SortPage and add the verbs and events shown in the example (see 6).
 - The TAKE verb saves the specified items in a take file at each record in TABLE1.
 - The SORT verb sorts the records in the take file, providing the sorting functionality that was not allowed in the subsection.
 - The AT TOP, HEADING events suppress the default report page headings, which are not needed in Autobahn Web reports.
 - The AT RECORD event executes the LOADVAR and PRINTHTML verbs for each record — which are now sorted in order.
7. The last step is to create a parameter in SortPage called _RECORD_COUNT to receive the value passed by the section call. Click the Edit Parameters icon in the Code Editor to create a 4-byte integer parameter (Storage: INT, Subtype: NUMERIC, Length: 10.0, Storage size: 4). See 7 for the PARM statement generated for your parameter.

You've now added the sorting functionality as a separate section which is called from inside DPWPage's subsection. To see the sorted list of items in action, compile and then run the application.

Andrew Bocchiechio
Product Support Specialist

After — a shorter subsection and a new section

```
REPORT-DPWPage:
...
SUBSECTION ListRecords:
  _RECORD_COUNT = 0;
  REPORT-SortPage
    USING _RECORD_COUNT MODIFY;
  IF (_RECORD_COUNT = 0) THEN BEGIN
    LOADVAR {_ERROR_MSG} = "No records meet your
      search criteria.\nPlease enter new search
      criteria.";
    CALLSUB "Query";
  END;
  ELSE BEGIN
    PRINTHTML "DPWPage.html", "ListFooter";
    PRINTHTML "DPWPage.html", "Footer";
  END;
ENDSUB;
...
EXIT;
```

The subsection now calls a REPORT section that sorts the list of records before displaying them.

```
REPORT-SortPage:
  PARM P-RECORD_COUNT FORMAT(INT,10,0,4);
  FOR FLAT.TABLE1 SELECTED("Table1") DO
    TAKE ITEM1,ITEM2,ITEM3;
  SORT ON ITEM1;
  AT TOP,HEADING DO NOTHING;
  AT RECORD DO BEGIN
    _RECORD_COUNT = _RECORD_COUNT + 1;
    IF (_RECORD_COUNT = 1) THEN BEGIN
      PRINTHTML "DPWPage.html", "Header";
      PRINTHTML "DPWPage.html", "ListHeader";
    END;
    LOADVAR {ITEM1} = $TRIM($EDIT(ITEM1),RIGHT);
    LOADVAR {ITEM2} = $TRIM($EDIT(ITEM2),RIGHT);
    LOADVAR {ITEM3} = $TRIM($EDIT(ITEM3),RIGHT);
    PRINTHTML "DPWPage.html", "ListRow";
  END;
EXIT;
```

Why Sysdoc?

Sysdoc helps you develop, test and debug applications by making it easy to:

- Obtain a comprehensive representation of the objects in a design.
- Record the application's progress to date using creation and modification dates.
- Produce documentation to any level of detail and refinement.
- Enhance information with free text and formatting and other Designer documents.
- Send output to a window, terminal, file or printer.

Sysdoc: a developer's dream

Sysdoc is a Speedware/Designer module that gives developers a quick and easy way of creating system documentation — detailed information about a design and the objects it contains.

From basic lists to complicated FOR loops, IF statements and variables, Sysdoc provides the information you need to manage your Speedware applications.

An easy Sysdoc example

Example 1 shows a Sysdoc document that lists the programs that access the CUSTOMER file. The output includes free text ("Programs using CUSTOMER") plus the list of programs. Follow these steps to recreate the example:

1. Run Designer and open a design.
2. Type DD+ to create a new document.
3. Enter a Reference, Name and Description.
4. Enter Type: Sysdoc (or press F6 Help).
5. Press F7 Accept to display the text window.

6. Enter the Sysdoc code as shown in the example, then press F7 Accept. Note:
 - Substitute your own application name and file name.
 - Don't forget to put the # sign in the first column where shown.
 - Text inside #NOTE – #ENDNOTE will not appear in the output.
7. To see the report, type DP (Document Print), then press F1 List on Window and F7 Accept. The document will be listed on screen.

Variables in Sysdoc

Example 2 shows the use of variables in Sysdoc documents. This example extracts information about the developers who created and modified Screen programs.

Want more info?

These examples are just the tip of the Sysdoc iceberg. For any kind of system documentation for your Speedware applications, Sysdoc can help you. For details, see the *Sysdoc Guide* in the Speedware online documentation set.

Robert Richardson
Consultant

Example 1

```
#NOTE
Find all programs in the MYAPP
application that access the CUSTOMER
file.
#ENDNOTE

Programs using CUSTOMER:
# FOR PROGRAM IN APPLICATION<MYAPP>†
# IF "!FILEVIEW" = "CUSTOMER"
!NAME_____
#   ENDIF
# ENDFOR
```

Output

```
Programs using CUSTOMER:
CUSTOMER-MAINT
CUSTOMER-DETAIL
CUSTOMER-ORDERS
```

† For the examples to work, programs must be listed explicitly in the Application Definition (AD) screen. Simply having *All will not retrieve any programs.

Example 2

```
#NOTE
Find Screen programs in the current application using
variables and report who created & modified them & when.
#ENDNOTE
# FOR APPLICATION
# LET LVAPP = "!REF"
# FOR PROGRAM IN APPLICATION<!LVAPP>†
# IF "!TYPE" = "SCREEN"
Program Name      : !REF
Format Type       : !FORMATTYPE
Database Name     : !BASE
File Name         : !FILEVIEW
Developed by      : !CREATOR on !CRTIME
Last modified by  : !MODIFIER on !MODTIME
#   ENDIF
# ENDFOR
# ENDFOR
```

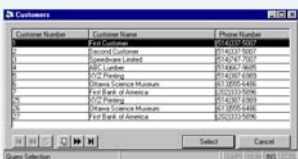
Output

```
Program Name      : QRYTEST
Format Type       : WINDOW
Database Name     : IMAGING
File Name         : IMAGER
Developed by      : MGR on 20-Dec-2001 09:21:07
Last modified by  : ROBR on 22-Mar-2002 15:31:33
```

At run time,
a small form



...is enlarged
during List Selected



... and returns to
its original dimensions
when List Selected closes.



Expanding List Selected in Visual Speedware

Visual Speedware applications usually include a List Selected window — a list of records selected for processing in the form.

The size of this window is limited by the form, meaning that the window is sometimes too small to display its contents comfortably. But if you enlarge the form to accommodate a large List Selected window, you can end up with an overly large — and half empty — form.

An easy way to resolve this dilemma is to use form events to manipulate the form size and position at run time. Follow these steps:

1. Create your form in Visual Speedware using the Form Wizard; make it any size you like. Keep the default List Selected position — List Selected in Form — but see the next page to display the List Selected in a frame.
2. Use the Repository Browser to create four local variables in the form. These variables will hold the original dimensions of the form. Name them L-FORM-WIDTH, etc. and define them as 4-byte integers: Storage: INT, Subtype: NUMERIC, Size: 10.0, Storage size: 4 (see 2 below for the code generated).

3. Calculate the size and position needed to display the List Selected window properly, for example, 8000 x 4000 twips. (Estimate these numbers by looking at the dimensions of the form in the Properties window.)
4. Use the form's Code Editor to resize the form when List Selected opens in the ENTER-LIST-SELECTED event. Here's how:

In Enter-List-Selected, enter code (see 4 below) to save the form's current size and position in the four variables, then resize the form with the optimal List Selected dimensions you chose in step 3.

5. Still in the Code Editor, restore the original dimensions of the form in the events that can occur when List Selected closes, CHOOSE-RECORD and EXIT-LIST-SELECTED:

Enter the resizing code (see 5 below) in Choose-Record, then copy and paste the same code in Exit-List-Selected — or use a subsection as described on the next page.

Now the form's List Selected window will automatically resize and reposition itself when it opens and the form will return to its original size and position after List Selected is closed.

```
FORM-frmCUSTOMER:

(* Declare four 4-byte integer variables *)
DCL L-FORM-WIDTH  FORMAT(INT,10,0,4);
DCL L-FORM-HEIGHT FORMAT(INT,10,0,4);
DCL L-FORM-TOP    FORMAT(INT,10,0,4);
DCL L-FORM-LEFT  FORMAT(INT,10,0,4);

(* When LS opens, save original form size *)
AT ENTER-LIST-SELECTED DO BEGIN
  L-FORM-WIDTH  = frmCUSTOMER.Width;
  L-FORM-HEIGHT = frmCUSTOMER.Height;
  L-FORM-TOP    = frmCUSTOMER.Top;
  L-FORM-LEFT  = frmCUSTOMER.Left;

(* Then resize and position for LS *)
  frmCUSTOMER.Width  = 8000;
  frmCUSTOMER.Height = 4000;
  frmCUSTOMER.Top    = 200;
  frmCUSTOMER.Left   = 200;
END;
```

```
(* When LS closes, restore original form size *)

AT CHOOSE-RECORD DO BEGIN
  frmCUSTOMER.Width  = L-FORM-WIDTH;
  frmCUSTOMER.Height = L-FORM-HEIGHT;
  frmCUSTOMER.Top    = L-FORM-TOP;
  frmCUSTOMER.Left   = L-FORM-LEFT;
END;

AT EXIT-LIST-SELECTED DO BEGIN
  frmCUSTOMER.Width  = L-FORM-WIDTH;
  frmCUSTOMER.Height = L-FORM-HEIGHT;
  frmCUSTOMER.Top    = L-FORM-TOP;
  frmCUSTOMER.Left   = L-FORM-LEFT;
END;
```

Bold indicates the code that you enter in the Visual Speedware Code Editors.

Subsections

When you have identical code to execute in more than one place, you should think about using a subsection. Subsections provide a handy way of duplicating code, and they have access to the section's parameters, variables and tables.

To use a subsection in this List Selected example, replace step 5 (in which you enter the form-size-restoring code in two events) with the following steps:

5. Use the Repository Browser to create a subsection under the form; call it RESET-FORM.
6. Open the subsection's Code Editor (right-click and choose Edit Code) and add the form-resetting code (see **6** below).
7. In the form's Code Editor, call the subsection with the CALLSUB verb in both the Choose-Record and Exit-List-Selected events (see **7** below).

See below for the specfile code that Visual Speedware generates for the subsection and the subsection call.

This is just a small example of using subsections; you'll appreciate their advantages even more in a large application. See *"Sorting records in the Dynamic Page Wizard"* on page 9 for a discussion of subsections in a Speedware Autobahn II application.

List Selected in frame

The List Selected window can either occupy the entire form or it can be displayed in a frame. Framing it is useful when a form has subforms or controls that need to be visible while in List Selected.

Even if you are resizing a small form to accommodate the List Selected, you might still want to display it in a frame. For example, you might want to increase just the width of the List Selected but still leave some buttons visible at the bottom of the form. To use a frame:

1. Set up the form-resizing code described in steps 1 through 5 on the previous page.
2. Use the Visual Basic tools to draw a frame on the form, positioning it on top of the form.
3. In the Properties window, size the frame based on your optimal List Selected dimensions. The frame will exceed the dimensions of the form, but that's fine — the form will be resized at run time.
4. Select the frame, right-click and choose Apply Function to Control; select List Selected Place Holder (with or without buttons).
5. Right-click the frame and Send to Back.

When List Selected is displayed, it will appear in the frame within the resized form.

Marc Cordeau
Product Support Specialist

```
(* This code calls a subsection from both events *)
SUBSECTION RESET-FORM:
    frmCUSTOMER.Width = L-FORM-WIDTH;
    frmCUSTOMER.Height = L-FORM-HEIGHT;
    frmCUSTOMER.Top = L-FORM-TOP;
    frmCUSTOMER.Left = L-FORM-LEFT;
ENDSUB;

AT CHOOSE-RECORD DO BEGIN
    CALLSUB "RESET-FORM";
END;

AT EXIT-LIST-SELECTED DO BEGIN
    CALLSUB "RESET-FORM";
END;
```

**Coding and calling
a subsection**

Media applications with multiple data sources

Do you have multiple data sources? Have you created multiple dictionaries? Are you using Decision Server and Media's multi-dictionary function to tie them all together? If not, you're really missing out. Read on!

Media V4.0 includes a feature that lets you map objects from one dictionary to another. This multi-dictionary feature helps you re-use existing Media dictionary objects (indicators, dimensions, calculations, etc.), in new or even existing dictionaries.

So what's the benefit? First, consolidation. You can choose the most useful bits and pieces of existing dictionaries to create one application that meets the needs of most users. Second, multi-source access. With the multi-dictionary feature, users can analyze data from multiple sources in just one briefing board.

Remember, you need Decision Server for this job. If you don't have it, just contact your Speedware rep.

Let's give it a try

Here's how you create a multi-dictionary environment from scratch:

1. Create System DNS ODBC connections for all your data sources. User DNS will not work.
2. In the Esperant Administration System, create a new repository. Then create a data view for each dictionary you will use in your multi-dictionary environment.
3. Now create the dictionaries: For each data view, choose View > OLAP View in the Administration System to open EditDict and create the dictionary. These dictionaries will be *secondary* dictionaries. The main dictionary you'll create in step 5 will map to indicators and dimensions in your secondary dictionaries.

4. Open the Decision Server and create a Decision Server service for the repository you created in step 2. Start the Decision Server service.
5. Create a new dictionary in EditDict. This will be the main dictionary for the application. It will use indicators and dimensions from your secondary dictionaries.
6. In your main dictionary, choose Dictionary > Multi-Dictionary. The Multi-Dictionary Editor is displayed.
7. Click New. The Multi-Dictionary Options dialog is displayed. This dialog lets you specify which secondary dictionary you want to map to. Do the following:
 - Change the Type to Media.
 - Enter a name to identify the secondary dictionary.
 - Enter the Decision Server IP address.
 - Enter the port number for the Decision Server service you created.
 - Enter the user name and password for the repository that contains the secondary dictionary.
 - Specify the relative path from the Esperant data view folder to the secondary dictionary. For example:
`\\Esperant_data_view_folder\DICTIONARY.DIC`
8. Click OK and then Close in the Multi-Dictionary Editor. The secondary dictionary's indicators, calculation rules and dimensions are displayed in the main dictionary.
9. Repeat steps 6 to 8 for every secondary dictionary you want to map to.

After you save the main dictionary, use it to create a briefing board that incorporates objects from the secondary dictionaries.

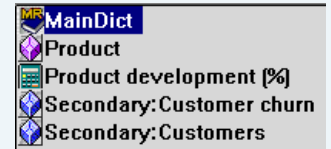
Anthony Novello

Operations Manager

Multi-dictionary Q & A

Q: How do I know which dictionary objects are from the secondary dictionary?

A: They're displayed in blue, and the dictionary name becomes part of the object name:



Q: Do I have to start from scratch?

A: Of course not. You can easily create a multi-dictionary environment from an existing dictionary. All you need is a connection to secondary dictionaries via Decision Server.

Q: Can I create a multi-dictionary environment with matrix dictionaries?

A: Sure. Whether you use matrix or relational dictionaries, the procedure is the same.

Q: How do I refresh dictionary objects?

A: Open the Multi-Dictionary Editor and click the secondary dictionary whose objects you want to refresh. Then click Refresh.

Q: If I create a multi-dictionary environment with matrix dictionaries, where do I load the *.DAT files?

A: Remember, the multi-dictionary feature "links" to source dictionaries, so all loading must be performed on those dictionaries.

Q: Can I modify secondary dictionary objects from within the main dictionary— that is, rename them, edit their space or delete them?

A: Not yet. However, future releases of Media will have this functionality.

Liven up your Esperant reports

Reports have to display solid, useful information in a clear format, but that doesn't mean they have to be visually dull. So here are a few guidelines for adding some pizzazz to your Esperant reports.

Before we get started, a helpful hint: whenever possible, save your customization settings as defaults—it's easier to have font and color changes applied automatically than to do them manually time and time again. And a word of caution: try not to use too many different colors and font faces, or your report could look a little cluttered or busy. Sometimes less is more. That said, let's get started:

Fonts!

The first way to add punch to an existing report is to change the overused MS Sans Serif font. You can use one font for all your headers and footers, and have another font for the page title and details. Once you've chosen fonts for an existing report, make sure to specify the same settings for future reports. You can do this under Tools > Options > Default Fonts.

Fonts and colors add pizzazz

Call Number	Contact Name	Customer Name	Customer Phone
300310	Walter Clarke	TRU Inc	9057722
30228	Don Anselone	TRU Inc	55-1-251-8213
30677	Bob Williams	TRU Inc	019-899-0026
246407	Mark Mackuch	DMR	1425-821-5347
11248	David Lambert	DMR S.A.	416-820-4888
246409	Mark Mackuch	DMR	1425-821-5347
914-5	General Truck	TRU Inc	416-793-9637
6788	Wilson P. Lee Chan	TRU Inc	1-647-0984
99477	Felipe Haege PCOR/Collet	TRU Inc	9057740
10440	Don Anselone	TRU Inc	55-1-251-8213
11552	Don Anselone	TRU Inc	55-1-251-8213
245201	Samuel Espinosa	TRU Inc	1-647-0984
24616A	Mark Mackuch	DMR	1425-821-5347
249	Pablo de Souza Abreu	TRU Inc	55052235
374166	Thompson Williams	TRU	416-793-9637
172018	Paul Pflue	TRU	07621-695
267945	Shawn Laska	TRU Inc	1481-651-3775
268	Pablo de Souza Abreu	TRU Inc	55052235
246502	Ardo D. Iversen	TRU Inc	1425-821-2000
55-00	John Sherman	TRU Inc	110-5111
Grand Total of Calls Placed:			922

Color!

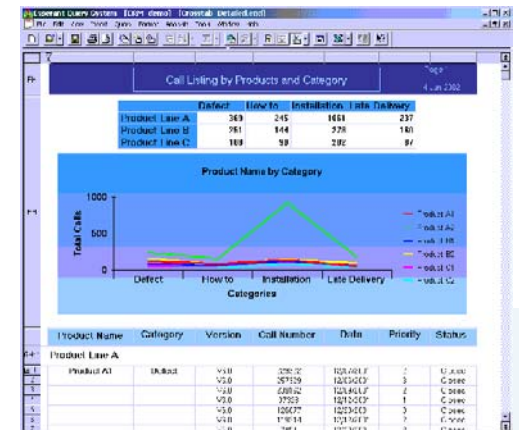
Esperant is a versatile reporting tool. Take advantage of it by adding color where you want (without being forced to add color where you don't!). Color can help focus attention on key areas of the report. From backgrounds to fonts, keep in mind that sharp-looking reports usually

use shades and tones of just one or two colors. For example, you can add a navy blue background to the page header, have a slightly lighter blue as the background of the column headers, and then lighter shades of blue for group header fonts and backgrounds.

As a final touch, use the lightest blue (perhaps from the group header background) as the font color of the page header title. A little contrast can do wonders for your report. Try changing your title font color to white on a dark background.

Graphs!

Good reports should create a complete picture of a given situation, so why not throw in a graph or two? Use the Insert menu to add a crosstab graph. Crosstabs depict your data from a higher level and with a different display. They help managers view the same data from a different perspective.



Graphs summarize report data

Last but not least, calculations!

Calculations can be really helpful in analyzing your data. Why not create a column that will contain color-coded alert information?

This addition will enable managers and executives to pinpoint problem areas at a glance.

Month	Category	Stage	Agent No	Contact Name	Tel	Case No.	Talk Time	Analysis
Year: 1999								
7			4	Michael Gault	(415)444-214	116188	31	
8			409	Francis Alon	(817)752-1111	116187	5	Great!
9			552	Call Meora	(301)634-2303	116242	35	Great!
10			620	Tracy Leir	(704)230-3273	116200	5	Great!
11			1334	Donny Hodde	(305)576-3913	116149	286	Warning !!!
12			4188	Philip Bull	Blip@msn.com	116188	111	Warning III
1			587	Josephus Sh	(818)486-1311	116181	11	Great!
2			0672	Chandler Driggs	(301)446-4354	116100	5	Great!
3		Development	1077	Jurgan Tr	4903722936930	116000	21	
Number of Cases for Month #7:							9	
11	5	Technical Question	Development	047	M. River Herk	115400	1	Great!
11				1656	Esther Lita	(205)629-3911	15	Great!
12				5813	Francis Hysenich	(303)366-5735	333	Warning III
13					Francis Hysenich	(303)366-5735	11	
14				532	Call Meora	(301)634-2303	0	Great!
15				6209	Karla Geber	(305)229-7522	20	Great!
16		Syncing Version		5813	Francis Hysenich	(303)366-5735	105	Warning III
17		Problem		85	John Small	(415)444-584	27	Great!
18				827	Christina	(301)444-584	11	Great!
19				4477	Nick Gebo	(707)230-3007	10	Great!
20	Software requested	Syncing Version		2032	WALTER F. ZUK	(415)245-4004	25	Great!
21	Software Problem	Development		625	Ray Gonzalez	(301)733-2813	5	Great!
22	Hardware Problem	Development		1116	Philip Bull	(415)444-584	47	Great!
23	Hardware Problem	Development		143	Nancy Gebo	(415)444-584	11	Great!
24	Desktop Setting	Development		5613	Francis Hysenich	(303)366-5735	15	Great!
25				333	George Fiedler	(305)677-3763	43	Great!
26				447	werdy Turf	441719034039	20	Great!

Calculations highlight important information

For your report to look like this Call Activity Report, your calculation column (the last column shown in the report) must contain the following syntax:

```

If ([Talk Time] > 60)
    Then COLOR = RED
    RET="Warning !!!"
Else If ([Talk Time] < 10)
    Then COLOR = GREEN
    RET = "Great!"
Else RET = ""
EndIf
    
```

That's enough to get you going for now. Here's hoping these tips help you spice up your reports.

Karine Alves
 Consultant

RPC and the HP e3000

Current versions of Visual Speedware and Speedware Autobahn II use sockets-based technology to handle the distributed access required by these client-server products. Earlier versions used DCE-RPC (the Remote Procedure Call service of Distributed Computing Environment). If you are using one of these versions on the MPE platform, you may require operating-system patches in order to run your applications, depending on your version of MPE and RPC. The Speedware product versions that use DCE-RPC are:

- Visual Speedware V1.02 and V2.00
- Speedware Autobahn V1.4 and Speedware Autobahn II V2.0

Patches

The following table summarises the patches required to run Speedware products that use DCE-RPC on HP e3000 platforms:

MPE version	RPC version and patches	Compatible?
5.0	1.0.x	Yes
6.0	1.0.x + ITOED07A + MPEKXP3A	Yes
	1.2.1 is not compatible Uninstall patches to return to RPC 1.0.x. Contact HP for details.	No
	1.0.x + Power Patch 2	Yes
6.5	1.0.2 + Power Patch 3 + ITOED07B Additional patches (MPELXU5, ~W8, ~X3, ~K5, ~P2, ~N4 or ~L2) may cause problems. If so, upgrade to RPC 1.2.1.	Yes
	1.2.1 (via FRIMX47C) + ITOED07B FRIMX47C fixes the unresolved externals problem.	Yes
7.0	1.2.1 via Power Patch 1 + FRIMX47B + MPEKXE4D + ITOED07C	Yes